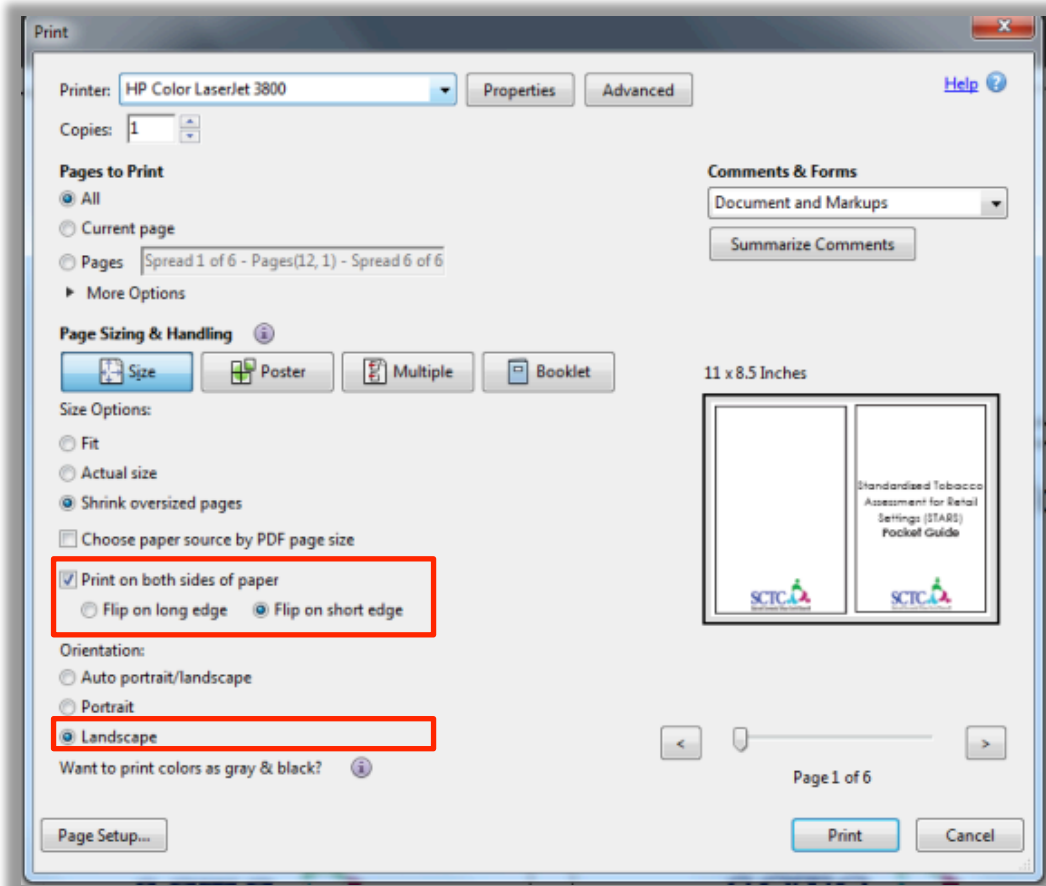


Please print the Pocket Guide in **color** and use the following settings:



Steps to assemble the Pocket Guide:



STEP #1: Fold sheets of paper so that the front page, page 3 and page 7 are all facing up.



STEP #2: Open the front page of the Pocket Guide and insert page 3.



STEP #3: Turn the pages so that page 6 is on the left-hand side and insert page 7 in the booklet.



STEP #4: Staple the Pocket Guide together and take it with you to the stores you survey.